



## Chipping Norton, NSW

101 Rugby Crescent

**4**  
BED

**3**  
BATH

**2**  
CAR

**RealEquity**  
estate agents

### AUCTION 23rd Nov @ 2:30pm

**View:** Sat, 9 Nov 2024 @2:00 pm - 2:30 pm

**Contact:** Hambi Lati  
02 9755 4222  
0402 469 556

**Type:** House

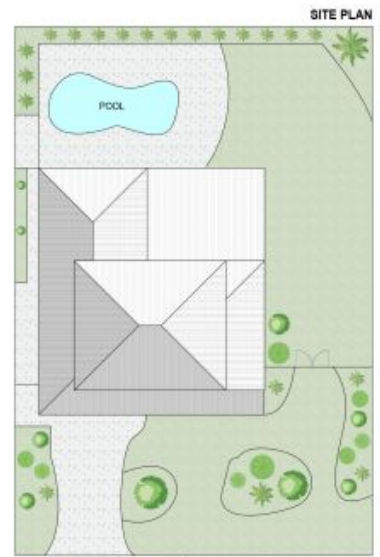
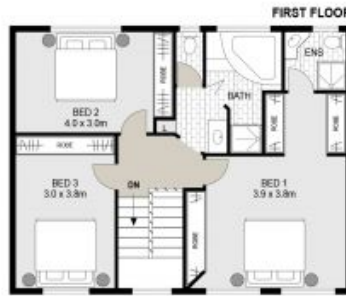
**Land:** 888.6m2

**Auction:** Sat, 23 Nov 2024 @2:30pm  
On Site

<https://www.realequity.com.au>

Enjoy timeless elegance in this stunning family residence, where character and charm effortlessly blend. This home showcases beautiful exposed brick walls, curved archways, and raked ceilings with exposed beams, creating a warm and inviting ambiance. The spacious interiors flow seamlessly into an entertainer's paradise, complete with a sparkling in-ground swimming pool and lush, landscaped surroundings. Enjoy a reposed lifestyle full of sophistication and comfort, perfectly set for everyone in the family.

A Few Inviting Features:



## 101 Rugby Crescent, Chipping Norton



Scale in metres. Indicative only. Dimensions are approximate. All information contained herein is gathered from sources we believe to be reliable. However we cannot guarantee its accuracy and interested persons should rely on their own enquiries.



Plans shown are only indicative of layout. Dimensions are approximate.

**Chipping Norton, NSW**  
101 Rugby Crescent