



**Wattle Grove, NSW**  
9 Bridges Avenue

**3** BED **1** BATH **2** CAR



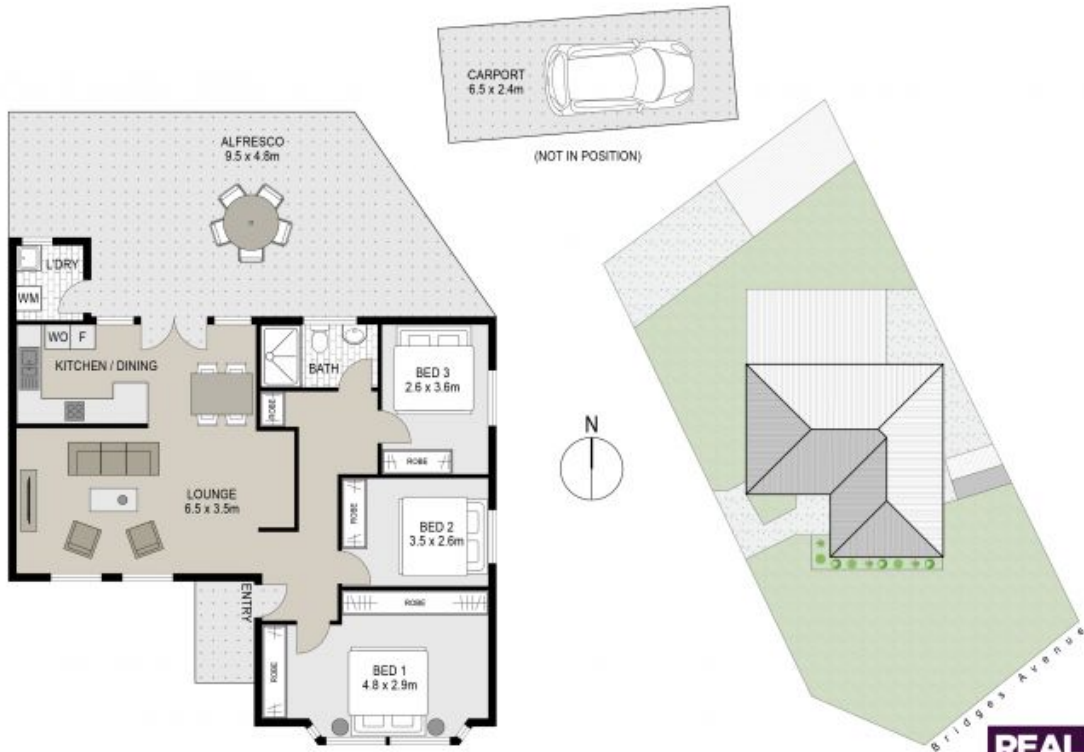
Presenting this charming cottage-style residence, positioned with a desirable corner position in an appealing quiet street. Defined by its cosy, sun-filled interiors and a superb entertainer's yard with excellent side access, this lovely home is perfectly suited for a growing family seeking a comfortable and relaxed lifestyle or to renovate to your own personalised haven.

- A Few Inviting Features:
- Open-plan living & dining filled with sunlight
  - Lovely kitchen with ample storage space

**\$1,159,000**

**Contact:** Joshua Prestia  
02 9755 4222  
0404 252 695  
Elle Hipolito  
02 9755 4222  
0478 933 344

**Type:** House  
**Land:** 527m2  
<https://www.realequity.com.au>



## 9 Bridges Avenue, Wattle Grove



Scale in metres. Indicative only. Dimensions are approximate. All information contained herein is gathered from sources we believe to be reliable. However we cannot guarantee its accuracy and interested persons should rely on their own enquiries.



Plans shown are only indicative of layout. Dimensions are approximate.

**Wattle Grove, NSW**  
9 Bridges Avenue