



Chipping Norton, NSW

9/7 Mead Drive

2
BED

1
BATH

1
CAR

RealEquity
estate agents

Enjoy resort-style living in this tranquil lakeside apartment, basking in the gentle morning sun from its lovely north-easterly aspect and ideal elevated corner position. Step into well-maintained interiors that boast a bright and airy open-plan design, flooded with natural light. This inviting space promises a cosy yet sophisticated ambience for your daily living.

A Few Inviting Features:

- Spacious open-plan living & dining area
- Private balcony extending from the living
- Kitchen with gas cooking & ample storage
- 2 good-sized bedrooms, both with built-ins

UNDER OFFER

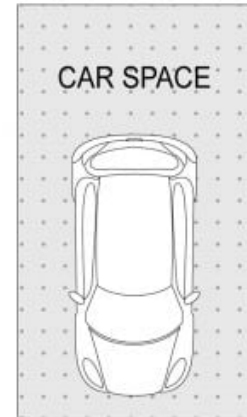
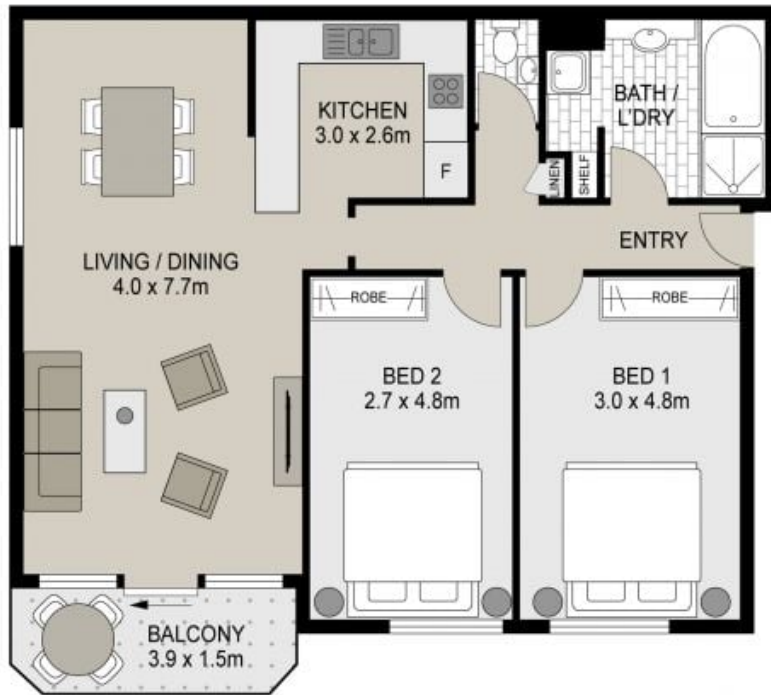
Council Rates: \$331/qtr (approx)

Water Rates: \$937/qtr (approx)

Contact: Joshua Prestia
02 9755 4222
0404 252 695
Elle Hipolito
02 9755 4222
0478 933 344

Type: Unit

<https://www.realequity.com.au>



(NOT IN POSITION)



9/7 Mead Drive, Chipping Norton

Scale in metres. Indicative only. Dimensions are approximate. All information contained herein is gathered from sources we believe to be reliable. However we cannot guarantee its accuracy and interested persons should rely on their own enquiries.



Plans shown are only indicative of layout. Dimensions are approximate.

Chipping Norton, NSW
9/7 Mead Drive