



Moorebank, NSW

1/13 Junction Road

3
BED

2
BATH

2
CAR

RealEquity
estate agents

Intelligently designed maximising space, light and modern appeal, these contemporary street facing townhouses present a perfect opportunity to secure a brand new residence in a prime location that are due for completion Spring 2017.

Features:

- Open plan living and combined dining area
- Lovely gourmet kitchen with stone benchtops
- 3 good size bedrooms with built in wardrobes
- Master bedroom with built in robe & ensuite
- Quality main bathroom with freestanding bath

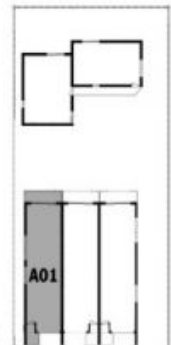
Contact: Joshua Prestia
02 9755 4222
0404 252 695
Type: Townhouse
Sold Date: 01/06/2017
Land: 219m2
<https://www.realequity.com.au>



GROUND FLOOR



FIRST FLOOR



Plans shown are only indicative of layout. Dimensions are approximate.

Moorebank, NSW
1/13 Junction Road