



Chipping Norton, NSW

31/211 Mead Place

2
BED

2
BATH

2
CAR

RealEquity
estate agents

With an extremely appealing floorplan, spacious interior and an inviting outlook, this superb top floor apartment offers a great opportunity for a first home buyer, downsizer or perhaps an exclusive addition to your property portfolio in a highly sought after Lakeside location.

Features:

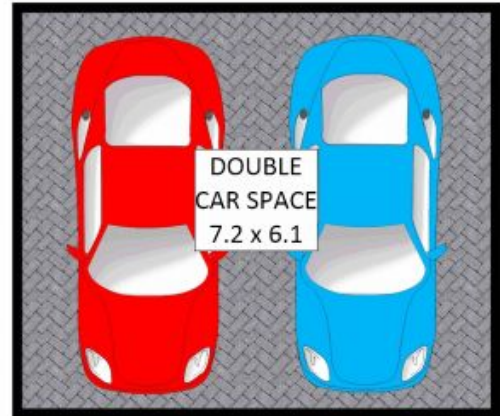
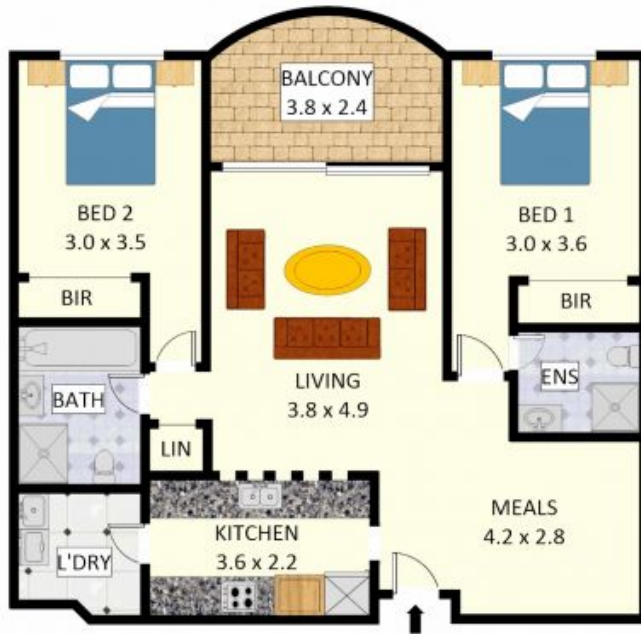
- Open plan living area and separate dining
- Beautifully presented kitchen & breakfast bar
- 2 generous bedrooms with mirrored built ins
- Master room with built in robe & lovely ensuite
- Main bathroom with separate bath & shower

SOLD \$520,000

Contact: Anthony Prestia
02 9755 4222
0414 775 577

Type: Unit
Sold Date: 07/04/2017
Land: 123m2

<https://www.realequity.com.au>



Disclaimer: Plans shown are for presentation purposes and are not part of any legal document. All measurements and figures are approximate. Floor Plans by **MUS: 0404 538 655**

Plans shown are only indicative of layout. Dimensions are approximate.

Chipping Norton, NSW
31/211 Mead Place