



Chipping Norton, NSW

26/5 Mead Drive

2 BED
1 BATH
1 CAR

RealEquity
estate agents

Perfectly positioned on the top floor in the most desirable complex in the entire suburb, this stunning residence epitomises tranquil apartment living with a sundrenched North aspect whilst the adjacent park and lake create the private peaceful surrounds that we all love.

Features:

- 2 great size bedrooms, with built in robes
- Open plan living and dining spaces
- Large kitchen with servery & gas cooking
- Main bathroom with floor to ceiling tiles
- Entertainer's balcony overlooking parklands

SOLD \$515,000

Contact: Joshua Prestia
02 9755 4222
0404 252 695

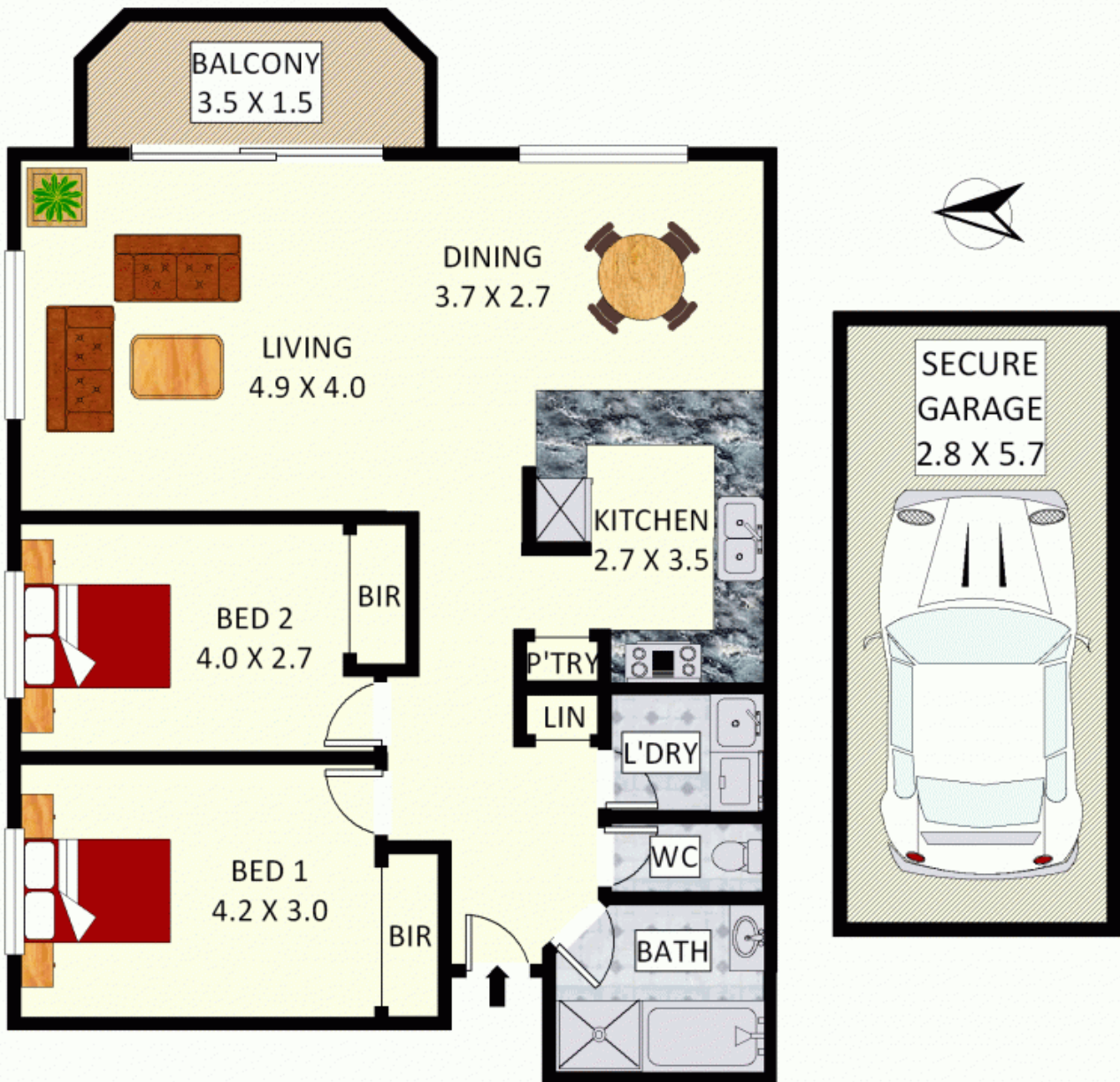
Type: Unit
Sold Date: 18/05/2016

<https://www.realequity.com.au>

RealEquity

estate agents

Unit 26/5 Mead Drive, Chipping Norton



Disclaimer: Plans shown are for presentation purposes and are not part of any legal document. All measurements and figures are approximate. Floor Plans by FARRIS: 0455 905 945

Chipping Norton, NSW
26/5 Mead Drive