



Chipping Norton, NSW
43/8 Mead Drive

3 BED **2** BATH **1** CAR



Enjoying a contemporary fit out and the best in a private apartment lifestyle, this sensational second floor residence is set to impress with wide open living spaces, modern finishes, a convenient lakeside location and resort style surroundings.

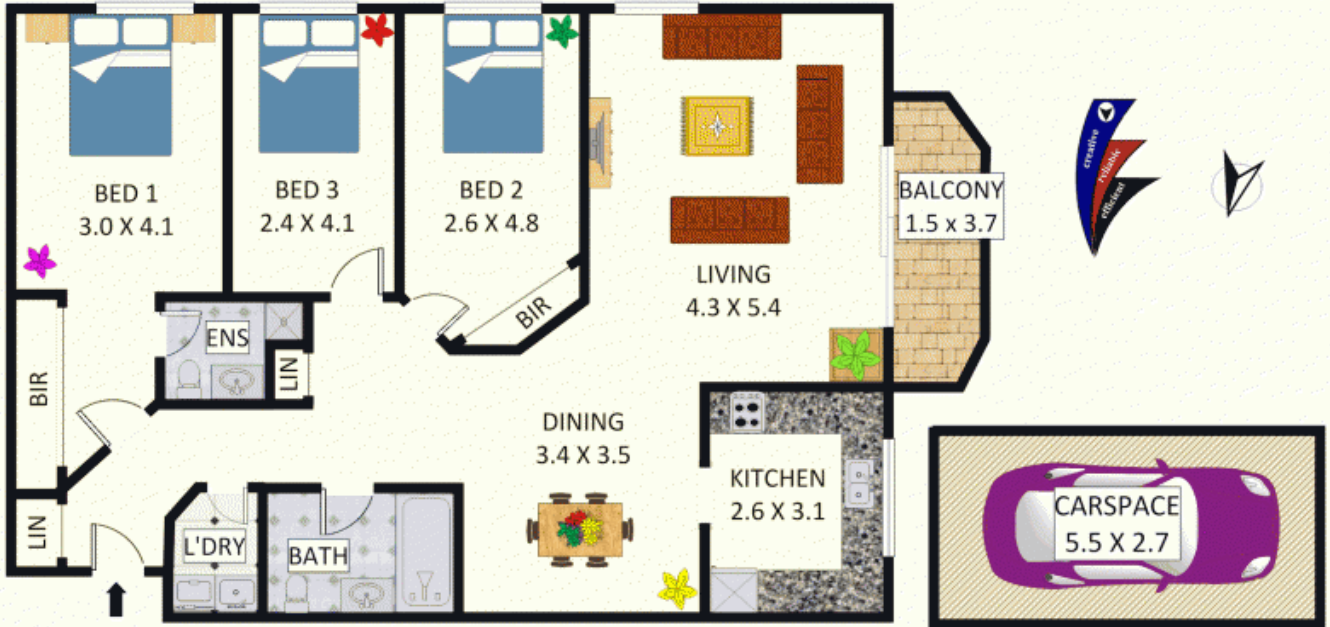
Features

- 3 large bedrooms with built in robes
- Master with lovely en suite
- Great sized lounge and dining areas
- Excellent kitchen, stainless steel appliances
- Impeccable bathroom with floor to ceiling tiles

Offers over \$530,000

Contact: Joshua Prestia
02 9755 4222
0404 252 695
Anthony Prestia
02 9755 4222
0414 775 577

Type: Unit
Sold Date: 02/09/2015
<https://www.realequity.com.au>



Disclaimer: Plans shown are for presentation purposes and are not part of any legal document. All measurements and figures are approximate. Floor Plans by MUS: 0404 538 655

Plans shown are only indicative of layout. Dimensions are approximate.

Chipping Norton, NSW
43/8 Mead Drive